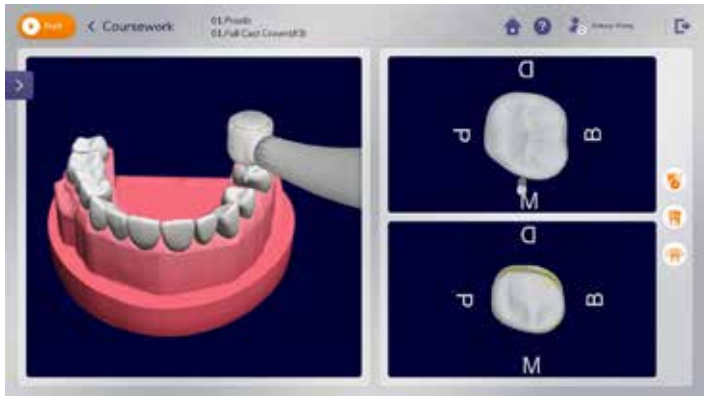
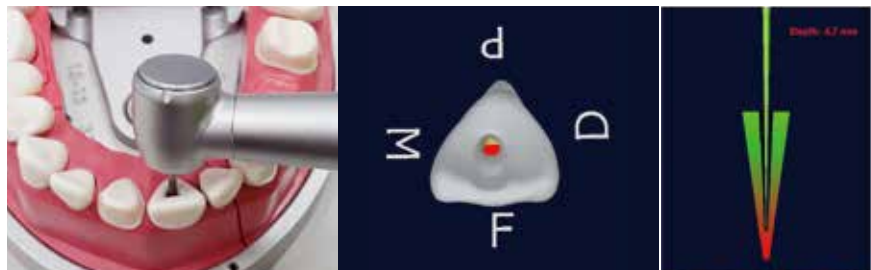


Why SimEx®

- © 3D real time visualization enables more effective and objective learning experiences.
- © SimEx Augmented Reality maintains the instructor method of teaching and enhances the teaching experience by providing real time feedback with customized evaluation of students' work.
- © Develops self-assessment skills early in training, resulting in more effective and independent students entering the clinical years.
- © Best technology for testing examination and instructor calibrations.
- © Real multi-disciplinary modules enable its use throughout the entire dental curriculum, from D1 to D4 as well as board examination preparation.
- © Reduces the instructors' workload, and enables the institution to more effectively use instruction time in the preclinical simulation clinics.
- © Customizable solutions from typodont selection to dental procedures with the smallest footprint offered in the marketplace.



Endo #8 ▶



Prosthodontics #3 #5 #9 ▶



SimEx is the most adaptive Augmented Reality Simulator currently in today's marketplace, enabling any dental school to select what typodont to use, and to customize the technology to their school's specific curriculum.

Individual school's specific procedures can be incorporated in SimEx's software.

Procedure selection and customization allows any dental school to utilize the technology, not only during the first year, but throughout the four year dental curriculum, as SimEx has the most updated built-in procedures in operative dentistry, and Prosthodontics.

Moreover, it can also be used for national board examination practice, as well as endodontic procedures including root canal, and post and core preparation, as well as veneer preparation.



Procedures customization

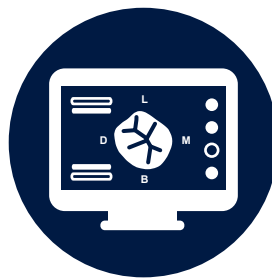
If you don't see a preparation that you have in your curriculum, just fill out our lab form with an optimal preparation of yours, and we will do the rest.



Fill out criteria of preparation



Scanning



Create the course

What makes SimEx® the most versatile Augmented Reality System

Typodont Selection

We let the dental Institution decide what typodont to use.

Procedures Customization

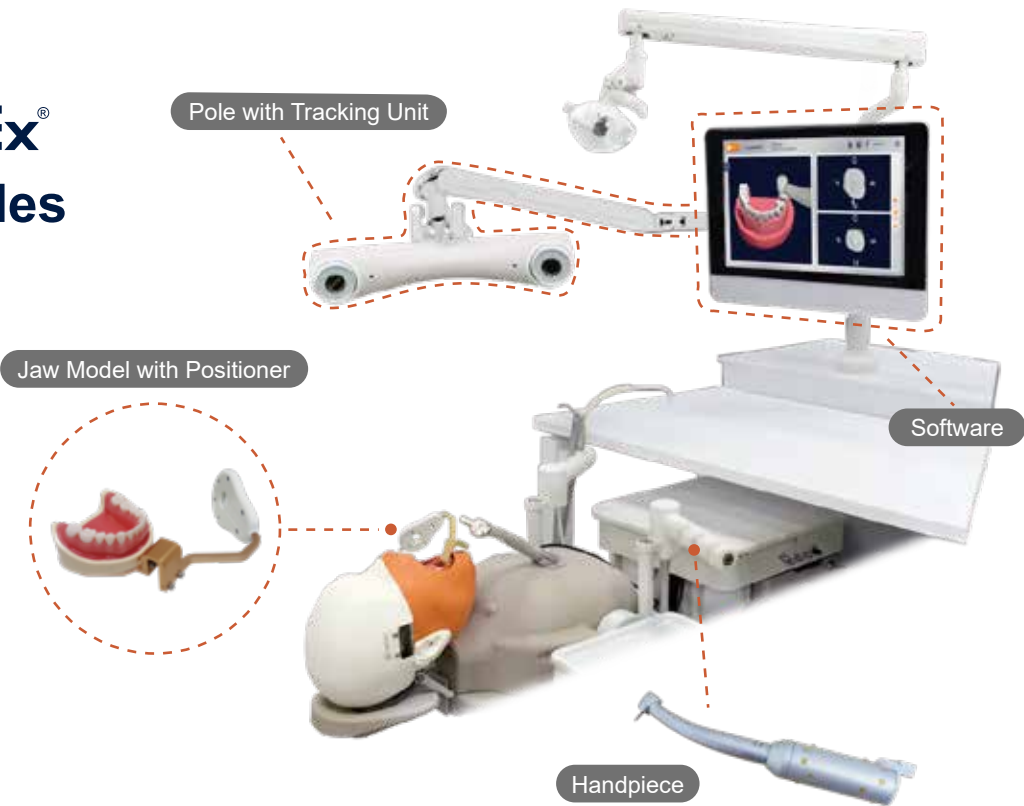
We let the instructors decide on measurements and design each procedure to match their curriculum in every discipline of the dental curriculum.
You decide what content you want to include.

Clear ROI with Extensive content design

If your institution is interested in adding other modules for dental assistants or dental hygienists and dental therapist, that could be easily done by using same hardware and software initially purchased.

The only Augmented Reality System used all along the 4 years of the dental curriculum with board examination procedures and with root canals procedure.

SimEx® includes



Applicable tooth model

SimEx is the only simulation technology that supports major typodont manufacturers

CDCA Board Examination Practice



ACADENTAL



NISSIN / KILGORE



FRASACO